



City of Westminster

Committee Agenda

Title: **Environment Policy & Scrutiny Committee**

Meeting Date: **Monday 2nd March, 2015**

Time: **7.00 pm**

Venue: **Rooms 1A, 1B & 1C - 17th Floor, City Hall**

Members: **Councillors:**

Ian Adams (Chairman)
Thomas Crockett
Jonathan Glanz
Louise Hyams
Vincenzo Rampulla
Karen Scarborough
Cameron Thomson
Jason Williams



Members of the public are welcome to attend the meeting and listen to the discussion Part 1 of the Agenda

Admission to the public gallery is by ticket, issued from the ground floor reception at City Hall from 6.00pm. If you have a disability and require any special assistance please contact the Committee Officer (details listed below) in advance of the meeting.



An Induction loop operates to enhance sound for anyone wearing a hearing aid or using a transmitter. If you require any further information, please contact the Committee Officer, Jonathan Deacon, Senior Committee and Governance Officer.

**Tel: 020 7641 2783; Email: jdeacon@westminster.gov.uk
Corporate Website: www.westminster.gov.uk**

Note for Members: Members are reminded that Officer contacts are shown at the end of each report and Members are welcome to raise questions in advance of the meeting. With regard to item 2, guidance on declarations of interests is included in the Code of Governance; if Members and Officers have any particular questions they should contact the Head of Legal & Democratic Services in advance of the meeting please.


AGENDA

PART 1 (IN PUBLIC)

- | | |
|---|---------------------|
| a) Front Sheet | (Pages 82 - 83) |
| b) Appendix 1: Built Environment Cabinet Member Update | (Pages 84 - 89) |
| c) Appendix 2: City Management Cabinet Member Update | (Pages 90 - 97) |
| d) Appendix 3: Parking and Sustainability | (Pages 98 -
103) |

Peter Large
Head of Legal & Democratic Services
20 February 2015

Agenda Item 4a

 City of Westminster	Environment Policy and Scrutiny Committee
Title of Report:	Update from Cabinet Members
Date:	2 March 2015
<p>This report sets out the briefing updates from the three Cabinet Members whose portfolios are scrutinised by the Environment Policy and Scrutiny Committee.</p> <p>Cabinet Member for the Built Environment (Appendix 1)</p> <p>Cabinet Member for City Management (Appendix 2)</p> <p>Cabinet Member for Sustainability And Parking (Appendix 3)</p> <p>The Cabinet Member for Sustainability And Parking, Councillor Heather Acton, is scheduled to attend the Environment Policy and Scrutiny meeting on 2 March 2015 to answer questions from Members of the Committee. The updates are intended to provide Committee Members with advanced information and to assist them in the preparation of possible questions.</p>	

This page is intentionally left blank



Environment Policy and Scrutiny Committee Briefing

Date: Monday 2nd March 2015

Briefing of: Cabinet Member for the Built Environment

Please contact: Matt Greet x 2852
mgreet@westminster.gov.uk

1. Neighbourhood Planning

- 1.1 The City Council continues to experience a huge level of interest in neighbourhood planning, far greater than any other London borough.
- 1.2 Once neighbourhood areas have been designated, communities in these areas will be able to apply to become the designated neighbourhood forum for that area for the next five years. As a representative neighbourhood forum, these groups will be able to undertake neighbourhood planning and produce their own statutory neighbourhood plan.

Designated Neighbourhood Forums

- 1.3 Westminster designated the first neighbourhood forum in Mayfair in January 2014. At the Forum's request, officers are now engaged in helping them form their various working groups, most recently providing statistical information on local land use to help inform the drafting of their plan. The Forum have undertaken informal consultation within the neighbourhood area, and are beginning to work up a potential vision and associated objectives.
- 1.4 Neighbourhood forums in Soho and Church Street Ward were designated later in 2014. Belgravia and Notting Hill East Neighbourhood Forums were designated in October 2014.
- 1.5 Since the Committee's previous meeting, the St. James's and Fitzrovia West Forum were designated on 5th February. Officers are meeting with the St James's Forum on 2nd March to discuss next steps and a similar session with Fitzrovia West Forum is being organised.

Neighbourhood Forum Applications

- 1.6 Public consultation on the Pimlico Neighbourhood Forum finished in October 2014 and officers met with its representatives on 1st December to discuss potential recommendations.

- 1.7 Consultation regarding the application received for Marylebone Neighbourhood Forum concluded on 21st January and officers are currently analysing the responses before presenting the results to me. Representations regarding the proposed Victoria Neighbourhood Forum closed recently on 20th February.
- 1.8 Consultation on the Maida Hill Forum commenced on 25th February and will continue until 10th April. At the time of writing, additional information was being sought on the Churchill Gardens Estate Forum application, but it was hoped that this would be resolved in time to also commence consultation on 25th February.

2. Westminster's City Plan – consultation booklets

- 2.1 Officers are continuing to take forward work on the detailed City Management policies which will be incorporated with the Strategic Policies to form Westminster's City Plan – a unified local plan for the City. This builds on previous work on the City Management Plan initiated in 2007. We have also taken the opportunity to review the City Council's strategy more broadly and ask key consultation questions in the latter booklets around how to achieve the desired growth in a Westminster context.
- 2.2 The Committee was updated on previous policy booklets in June 2014, whilst the Energy and Heritage, Views & Tall Buildings booklets formed a substantive item on the Committee's agenda on 10th November 2014.
- 2.3 I formally signed off the Spatial Policy & Implementation and Mixed Use & Office to Residential Conversion policy booklets prior to Christmas and consultation on their content closed on 27th February.
- 2.4 The final tranche of City Plan policy booklets – Energy, the West End, Affordable Housing and Heritage, Views & Tall Buildings – were published for public consultation on 12th January and submissions are being received up until 31st March.

3. Development of a Westminster Community Infrastructure Levy (CIL)

- 3.1 CIL is a new levy which is the government's preferred vehicle for replacing significant portions of section 106 contributions. It can be charged on developments in a local authority's area with the money raised being used to pay for the provision, improvement, replacement, operation or maintenance of infrastructure that is needed as a result of development.
- 3.2 Officers continue to work on responding to the outcomes of the PDCS stage consultation, as well as meeting with BNP Paribas Real Estate to discuss the comments received and to establish a work programme and timetable going forward.

4. Crossrail

- 4.1 **Crossrail Line 1:** Tottenham Court Road station's new enlarged ticket hall officially opened to Northern line customers on 12th January 2015. The works are part of a £1bn investment towards a new Crossrail station, and to upgrade the tube station and build a direct interchange with Crossrail. The new ticket hall is nearly five times the size of the previous one and upon completion of the station upgrade in 2016, it will be six times larger and serve both the Central and Northern lines. In 2018, customers at this station will be able to interchange with new Crossrail services. Work at the station continues.
- 4.2 **Crossrail Line 2:** Crossrail Line 2 (CRL2) is a further proposed sister line to the one already underway. It will run through central London and into Surrey and Hertfordshire, adding capacity to London and the south east rail network and promoting growth and regeneration along the route. In the City of Westminster CRL2 will include a new station at Victoria and will link to Crossrail Line 1 at Tottenham Court Road (Dean Street ticket hall).
- 4.3 The proposed Regional Route option is being jointly progressed by TfL and Network Rail and is the Council's preferred option, subject to detailed design outcomes.
- 4.4 The Department for Transport (DfT) are currently reviewing the CRL2 safeguarding and a public consultation took place between November 2014 and January 2015.
- 4.5 On 29th January the City Council submitted an initial officer level response to the DfT on the revised safeguarding, setting out the detailed impacts and concerns in Victoria and Soho for consideration. The Council's response is subject to review by Cabinet Members and a final response will be submitted to the DfT in due course.
- 4.6 Whilst continuing support for CRL2, there are a number of issues on which we will be discussing impacts and options with TfL to ensure residential amenity, continuation of business and the best package of transport measures will be provided.
- 4.7 In Soho the use of the Soho Curzon Cinema on Shaftsbury Avenue as a construction site has generated public concern and there is a high-profile campaign underway to protect the cinema from demolition, led by the Save Soho group. Officers will work with TfL to consider alternative sites or the relocation of the cinema use. TfL are proposing to hold a community meeting in Soho in mid-March to address these concerns.
- 4.8 Further in Soho the City Council will strongly resist the use of Soho Square as a construction site, given the huge impacts of Crossrail Line 1 on Soho Square and the importance of the Square and Gardens as a public amenity.
- 4.9 In Victoria is now clear that CRL2 will require the use of Victoria Coach Station's Departure Hall site to allow the site to be used for construction works and a permanent ventilation shaft. TfL will therefore need to find new locations for the Coach Station before any CRL2 works can commence here.

- 4.10 The City Council has been involved in early discussions with TfL officers and senior level discussions with Daniel Moylan and Michele Dix and we have requested to continue to meet with TfL at regular intervals as the CRL2 scheme develops. The construction of Crossrail 2 is expected to start from 2020.

5. Victoria Area Schemes

- 5.1 London Underground's Victoria Station Upgrade (VSU) works are progressing as planned, with the new northern ticket hall due to open in 2016, alongside Phase 1 of Land Securities' mixed use Nova scheme.
- 5.2 TfL are reviewing options for the relocation of Victoria Coach Station (VCS) to make way for Crossrail Line 2 works to the Departures Hall Site in the early 2020s and for the removal of some buses from the front of the mainline station at Victoria.
- 5.3 Whilst Network Rail continue to develop their Masterplan for improvements within the Station, their bridge strengthening works to Ebury, Elizabeth and Eccleston Bridges are due to start in June this year.
- 5.4 Together these works will allow for further consideration to be given to the future of the Inner Ring Road around and through Victoria to improve traffic flows and enhance the pedestrian experience.

6. Victoria – Nine Elms Bridge

- 6.1 Wandsworth's appointed consultants have approved a number of expressions of interest following their Bridge Design Competition from a range of as yet unidentified high profile, international architectural practices.
- 6.2 The consultants arranged a public exhibition of the resulting design submissions to be held at the Westminster Boating Base on 23rd-24th February and at the Rose Centre in Wandsworth on the 27th-28th. Images are also be posted onto the competition website www.nepbridgecompetition.co.uk
- 6.3 Whilst officers continue to reiterate the Council's serious concerns about the proposed bridge, a number of South Westminster residents have accepted invitations to take part in a Residents' Review Panel to consider the applications and make recommendations to a Jury Panel before a winning team is chosen by Wandsworth Council in the summer.
- 6.4 The exact location of where this bridge is proposed to be located has yet to be selected and much work still needs to be done on this key point, which will also then have a significant impact on the potential bridge design.
- 6.5 This is not a live development project and Westminster City Council officers continue to reiterate our strong objections to the proposals. We have already received letters of objection to the bridge from the Westminster Boating Base, local residents and Churchill and Tachbrook Ward Councillors.

7. Thames Tideway Tunnel

- 7.1 The Thames Tideway Tunnel is a proposed new 16 mile-long sewer project required to protect the tidal river from increasing pollution.
- 7.2 Officers attend monthly meetings of the Strategic Relevant Authority for the Thames Tideway Tunnel, at which they are helping to develop the Strategic Freight Transport Framework for the River Transport Strategy for the Project.
- 7.3 Thames Tideway Tunnel has submitted its first application to discharge condition PW19 (noise monitoring) within the Development Consent Order(DCO), and processes are being set up to meet the requirements for processing applications as set out in the DCO.
- 7.4 Officers attend quarterly meetings of the Thames Tideway Tunnel Forum, the Thames Tideway Tunnel Planning Forum and the Thames Tideway Tunnel Interboroughs Forum.

8. Garden Bridge

- 8.1 A full planning application for the Garden Bridge was submitted by TfL on behalf of the Garden Bridge Trust, on 29th May 2014. The application was approved by Lambeth Council on 11th November 2014 and by my Planning Applications Committee on 2nd December 2014. The Mayor of London gave his approval to the Garden Bridge project before just Christmas.
- 8.2 The Trust plans to begin building the bridge later this year, pending raising their target funding, with an anticipated opening in 2018.

9. Change in Cabinet responsibilities

- 9.1 Following Cllr Ed Argar's decision to step down from the Cabinet at the end of January, there have been a number of changes to the responsibilities included in each portfolio.
- 9.2 In Built Environment this has meant that responsibility for public realm capital schemes lies wholly under my purview. This covers all executive functions relating to the Public Realm Capital Works Programme, including street improvements and street furniture which have little or no impact on traffic.

10. Proposals for Introducing a Two-Way Operation to Baker Street

- 10.1 As a result of the changes in Cabinet portfolio responsibilities, I am now the Cabinet Member responsible for the proposals for introducing a two-way operation to Baker Street.

- 10.2 Two weeks ago I sent letters to a number of stakeholders in the area outlining that, in light of information gathered in the period since the publication of the original report, I had narrowed down the options for improving the right-turning capacity for southbound traffic on the Marylebone Road.
- 10.3 I have decided to discount the two options that take traffic routes through Dorset Square to make a right hand turn onto Marylebone Road. The two options that will put forward for the public consultation will be for a right hand turn at Allsop Place and the alternative right hand turn at Rossmore Road.
- 10.4 The City Council will be engaging in further informal discussions with stakeholders in the run up to the start of the public consultation.

11. Development Planning

- 11.1 Officers continue to liaise with Department for Communities and Local Government (DCLG) over vacant building credit incentive.

Attention is now being paid to working on a more stringent and demarcated definition of the term 'vacant', in order to ensure the unintended negative effects of the credit in Westminster can be rectified.

- 11.2 At the previous meeting of the Committee my then Deputy, Councillor Richard Beddoe, was asked about any perceived impacts of the new guidelines around schemes delivering 10 units or less not having to make Section 106 contributions.

Whilst this is of concern, the threshold in terms of dimensions set at 1,000m² will negate many of the impacts here in Westminster given the trends in development size here.



Environment Policy and Scrutiny Committee Briefing

Date: Monday 2nd March 2015

Portfolio: Cabinet Member for City Management

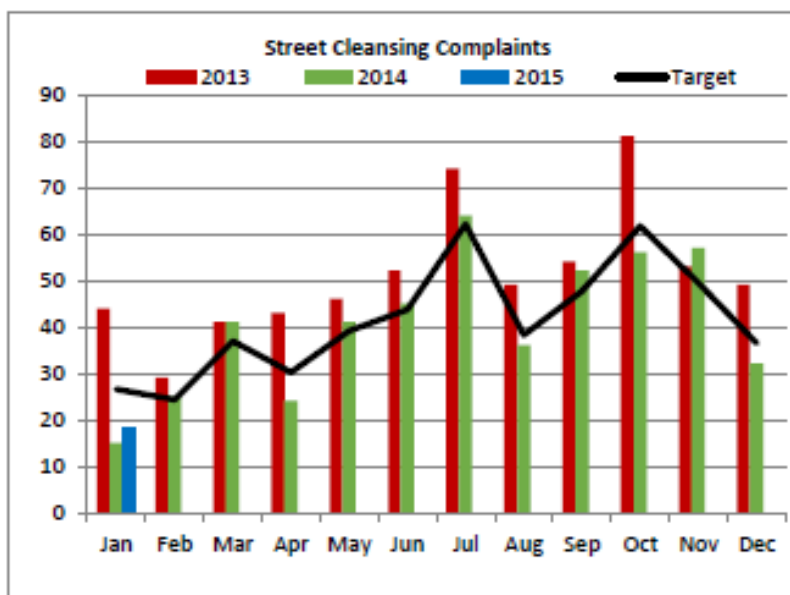
**Briefing Author and
Contact Details:** **Councillor Richard Beddoe**
rbeddoe@westminster.gov.uk

1. Budget 2014/15

- 1.1 The City Management portfolio is reporting a favourable full year forecast against budget as at the end of period ten of £2.2m (period nine £2.12m), against a full year revenue expenditure budget of £50.8m. The forecast variance is largely due to additional income from roads management and commercial waste. Forecast outturn capital expenditure is £10.38m, representing an underspend of £0.18m emanating from reductions below anticipated levels for recycling containers and works on St Mary's Churchyard Boundary Wall.

2. Cleansing Performance

Streets Cleansing	
This Month	
Jan-14	15
Jan-15	18
% Var	20%
Target	27
Status	Ahead
YTD	
2014	15
2015	18
% Var	20%
Target	27
Status	Ahead



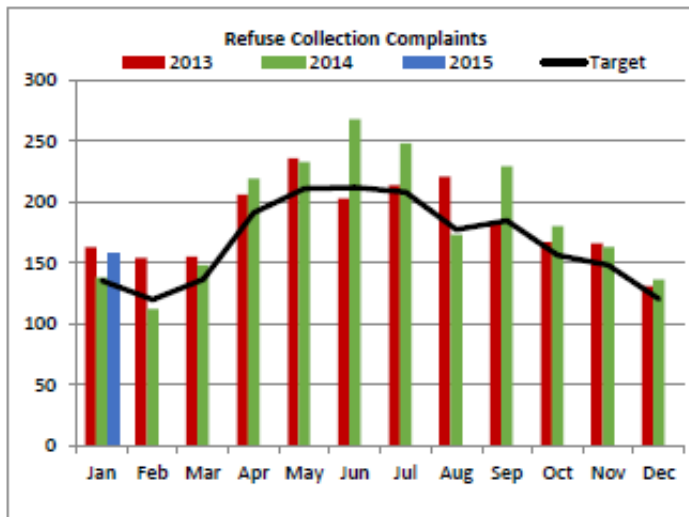
- 2.1 We have just had the results of our third and final survey of the year from Keep Britain Tidy. This is an independent survey measuring how well we are doing in the key areas of litter, detritus, graffiti and fly-posting in an absolute sense. The table overleaf gives previous data for comparison.
- 2.2 Of greatest note is the score for detritus. In the initial survey, we scored 6% which, although high, was still just within the margin of expectation. For this latest survey, we scored 0% for the second survey in a row, which means that not one of our fifty metre long lengths of footway and carriageway, selected at random from the some three hundred we have in Westminster, showed any sign of detritus.
- 2.3 We scored well in other areas too, particularly for low levels of litter, which also means that all of our Business Plan targets for cleansing have now been met, and the City Council is continuing to deliver on our commitment to clean streets.

YEAR	TRANCHE	Litter	Detritus	Graffiti	Fly-posting
2012-13	1	7%	4%	5%	1%
2012-13	2	10%	6%	4%	1%
2012-13	3	4%	2%	2%	1%
2013-14	1	4%	2%	2%	0%
2013-14	2	4%	0%	1%	0%
2013-14	3	4%	2%	1%	0%
2014-15	1	5%	6%	1%	0%
2014-15	2	5%	0%	2%	0%
2014-15	3	1%	0%	4%	0%

2014-15 Average	3.7%	2.0%	2.33%	0%
Business Plan Target	5.0%	3.0%	3.0%	1.0%

3. Waste

- 3.1 Overall the collection service operated well in the period. Over 3 million waste collections were undertaken and just 0.005% of collections generated complaints. A key service objective is continuous improvement, targeting a 10% reduction in complaints compared to the average of the last three years complaints.



Refuse	
This Month	
Jan-14	138
Jan-15	157
% Var	14%
Target	135
Status	Behind

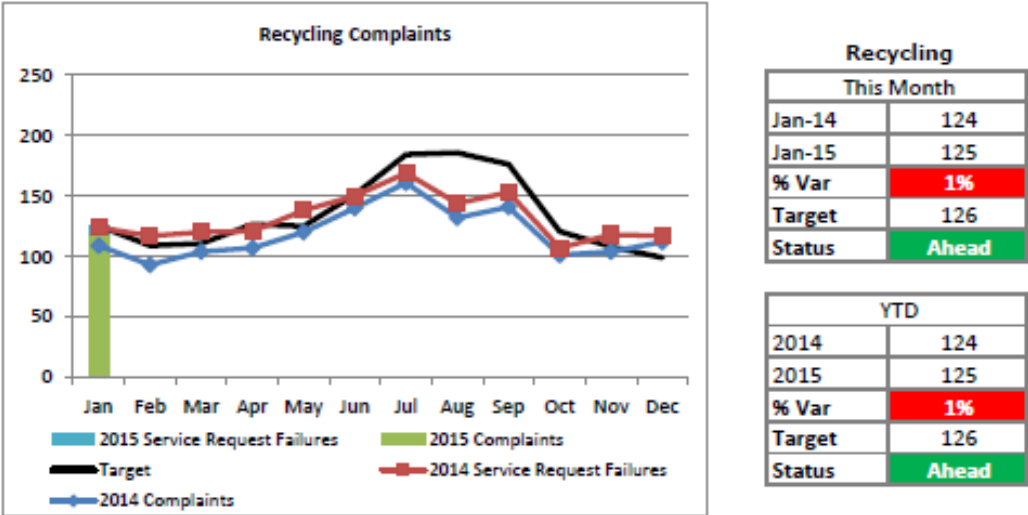
YTD	
2014	138
2015	157
% Var	14%
Target	135
Status	Behind

Waste Disposal Contract re-let

- 3.2 Officers have commenced the soft market testing phase of the project. This phase is scheduled to be completed in March.

4. Recycling

4.1 Recycling collection services are operating well. Encouraging increased participation amongst our residents in ensuring proper separation of their recyclables remains a key focus. To support this goal, a volunteer scheme was established in August 2014. To date, 31 volunteers have been recruited. Exceeding the annual target of 20 set at project start. The volunteers support engagement and service monitoring works.



5. The Winter Plan

5.1 The City Council's strategy for mitigating the impacts of adverse seasonal conditions is set out in a Winter Service Plan. The plan provides a holistic response to the issues posed by inclement weather, including a hierarchy of priorities for the treatment of roads and pavements and defining the roles and responsibilities of contractor and Council staff. The plan incorporates a weather forecasting service that includes two to ten-day summary forecasts, detailed 36 hour forecasts delivered three times a day and access to a live forecaster, all providing fundamental information that dictates our actions. The plan was put into effect from 1st November 2014.

5.2 We have a gritter fleet comprising six trucks that can carry up to eight tonnes of salt and two smaller trucks for our narrower streets that can carry up to five tonnes. This season, we have available: a full Salt barn in Brent, holding 1,500 tonnes of rock salt, over 20 tonnes of bagged white salt and specialist corrosion-inhibiting de-icer (for schools, estates, footbridges and council properties); eight smaller vehicles for mechanically gritting the pavements; and almost 200 on-street salt bins across the City for sweepers to use to grit the pavements.

5.3 So far this season, the gritters have been mobilised on 21 separate nights to deal mainly with ice and hoar frost. The first week of January saw our first full mobilisation of the network in response to a definitive forecast of snow, which fell overnight. So far, around 300 tonnes has been spent from the salt barn of 1,500 tonnes, which will be replenished in the coming weeks.

6. Highways

6.1 The following table shows the performance for highways reactive defects compared against the respective targets. For reference, the previous contract targets and January 2015 figures are also given.

	December and January Performance	January Performance	Target from 1 April 14	Previous Contract Target
Priority 1 (2 hr)	87%	87%	98%	98%
Priority 2 (24 hr)	95%	93.4%	98%	95%
Priority 3 (10 day)	93.5%	92%	98%	90%
Priority 4 (28 day)	94%	91%	98%	83%

6.2 Performance on two hour jobs has fallen over the period due to higher volumes in both December and January, coupled with the loss of one highways crew. While performance is still below targets over the period for other service levels, there has still been continued improvement. Performance for 24 hour jobs has increased by 1% and 10 day jobs by 9%. For 28 days jobs, performance has dropped by 2% which is in large part due to the highest volume of jobs raised during December. This is in line with the normal trend of a higher volume of defects during winter months.

6.3 The backlog of works that Cllr Argar reported to the last committee is still being worked through and slower progress is being made than planned due to the lower resourcing levels. Officers are monitoring this on a weekly basis and reporting progress to me on a fortnightly basis.

7. Public Lighting

7.1 Reactive performance has improved over the period. Two hour jobs have improved by 13% to just below the required target. For 48 hour responses, performance improved by 4.75%.

	December and January Performance	January Performance	Target from 1 April 14	Previous Contract Target
Priority 1 (2 hr)	97%	98%	98%	98%
Priority 3 (48 hrs)	98.75%	97.5%	98%	90%

Outages

7.2 The year to date percentage of outages as of 17th February is 2.2%. This has increased over the period but this is normal as there are a higher volume of outages in January following the festive season break. This is still below the 4% target. The average time to fix a light under local authority control is also well within the target 12

days at 4.03 days. The total time to fix a light where UKPN also need to carry out work is 33.12 days, again, well within the 40 day target.

- 7.3 There are some locations, such as Shaftesbury Avenue and Harewood Avenue, which have caused a number of outages at the same location and these are being investigated.

Long Term Faults

- 7.4 In September 2014, there were 20 jobs more than 40 days old, a reduction of 11 over the period. There are always a small number of more complex cases to fix which will take longer and this number is small in comparison to the 14,000 lighting columns that make up our network.

Remote Monitoring System ('Smart Lights')

- 7.5 The installation of the infrastructure is now complete which will enable to the City Council to monitor street light outages remotely. The system also enables the light levels to be varied. The next steps are to change the business processes to generating works orders to our Service Provider remotely. The full end to end process is expected to be in place by September 2015.

8. Highway Capital Programme Delivery

- 8.1 The Highways Footway and Carriageway Capital programme continues to progress following the festive break. There are a small number of schemes on the programme that cannot be delivered for logistical reasons such as Crossrail works. These are being re-programmed into 2015/16. In addition, the Saltram Crescent resurfacing scheme will also carry forward as this is being combined with options to improve traffic management at the same time.
- 8.2 Development of the 2015/16 programme has been completed and I am now considering the schemes to be included in the programme before making a final decision.

9. Gully Service

- 9.1 As of 31st January, 96.5% of the network has been visited under the routine programme and 73% of gullies have been cleaned. Since last reporting we have seen improvement in the freeing of stuck lids with a high success rate, so effective cleaning can now be done. This will be achieved by utilising the necessary working methods and options needed to gain access to these drains and escalating any units that need further works as soon as possible.

10. Gully Further works

- 10.1 We have now successfully completed 18 out of the 20 drainage further works jobs in Phase 1 of our programme. The following have now been completed: - Craven Hill Gardens, Brook Street, Chepstow Road (two locations). Works in Princes Mews, John Adam Street and Portland Place are all programmed to start within the next few weeks.

This page is intentionally left blank



Environment Policy and Scrutiny Committee Briefing

Date: Monday 2nd March 2015

Briefing of: Cabinet Member for Parking and Sustainability

**Briefing Author and
Contact Details:** Heather Acton x5614
hacton@westminster.gov.uk

PARKING

1 New Contracted Parking Service

- 1.1 The new contracted Parking Service is now fully operational with NSL.
- 1.2 Differences in the payment system from the previous pay-by-phone system were noted by a few customers but any inconsistencies were quickly rectified. Only a handful of complaints have been received from tens of thousands of daily transactions.
- 1.3 Following the implementation of the new parking contracts, the service has stabilised and is operating within service levels. Further enhancements to both the resident permit application and suspension online portal are in progress.

2 New Business Processing and Technology Contract

The new Business Processing and Technology contract was implemented successfully in November.

3 New Online Resident Permit Service

A few people experienced difficulties using the new on-line resident permit service and some disabled badge holders also faced delays. Manual intervention ensured that permits were issued quickly and applicants were contacted (by telephone where possible) to be given reassurance. The service is now operating as expected and further improvements to the self-serve web portal will be implemented over the next few months.

4 The Marshalling Approach

The Marshalling approach continues to be positively received by members of the public. The feedback from Marshals is that there is already a positive shift in customer attitude and behaviour and this is supported by the fact that we have seen a significant reduction in the volume of complaints and the number of physical and verbal assaults against Marshals. Under the contract, Marshals were issued with new handheld technology to support their role, and have quickly adapted to the new equipment. Performance has returned as anticipated to pre-implementation levels within a few weeks. Marshals are now being trained to take on new on-street responsibilities.

5 Occupancy Survey

A city-wide occupancy survey has been commissioned to establish how the controls and approach to managing the kerbside is impacting on traffic management. The last survey was carried out in 2011.

6 ParkRight App

The bay sensors and the new ParkRight app were fully implemented in October and the team is already working on a new version of the app for release in the spring/summer

SUSTAINABILITY

7 Greener City Action Plan

7.1 A final draft of the action plan (previously known as the Environmental Sustainability Strategy) was reviewed and agreed, subject to minor alterations, by my Cabinet colleagues on 9th February. This Committee will receive a revised version incorporating those changes.

7.2 The Plan will be signed off as a Cabinet Member decision in March, with a launch in May or June 2015.

7.3 The Plan, which will engage stakeholders and encourage involvement, will be promoted through a web-based platform.

8 Residential Lead Electric Vehicle Recharging Proposal

8.1 The Council has agreed to pilot a residents' only electric vehicle recharging network. This 18 month project will set up two residential only recharging bays and test issues such as parking priorities in residential areas and street

management with the aim of delivering a market model that can be taken forward on a sustainable basis.

8.2 The City Council has also participated in a pan-London bid to secure £20m for residential and business engagement on electric vehicles. The bid's key projects include:

- Electrifying all the car club bays in London;
- Delivering a residential car club model for London;
- Delivering 10 "Ultra low emission neighbourhoods", which will constitute residential and business areas; and
- Wider education and awareness.

Shortlisting will be announced in mid-March.

9 Blue Point London (Source London)

9.1 The City Council continues to meet Blue Point London and we are still discussing details on key points of their proposal.

9.2 Blue Point London have agreed to remove all aspects of their "Point to Point" car club and they have agreed to take on the maintenance and energy costs for the recharging points.

10 Car Club/Point to Point

It has been agreed that Point to Point car club schemes should not be pursued in Westminster, due to their potential risk of drawing in more vehicles into central London. The North London scheme will also be monitored and evaluated before any further consideration is made.

11 Biodiversity and Open Space Study

11.1 All 2014 site audits have been completed: more than 200 of the borough's public and private open spaces have now been assessed and the ACCESS database containing the collated data is under construction, informed by discussion with Greenspace Information by Greater London (GiGL).

11.2 The new Policy, Performance and Communications Department will be leading the analysis of this data and will revisit the Biodiversity & Open Space Strategy based on this data and the findings and recommendations of the Open Space Study.

12 Air Quality

A full report is being discussed at this meeting.

13 Public Health/Sustainability Projects

Two projects tackling childhood obesity and tooth decay improvement are being developed that support the Greener City Action Plan: a food growing project in Church Street with links to schools (a pilot project is being established in 2015 with potential to expand across other estates in Westminster) and community water points (officers are exploring partnership working with TfL to introduce refilling points at tube stations).

14 Retrofitting the Westminster Archives Centre

A business case is being developed for an exemplar building retrofit project at the Westminster Archives Centre. A funding bid has also been submitted to 'Drain London' to fund a green living wall on the southern aspect of the building.

15 Schools Sustainable Design Project

Officers have been working with Vital Regeneration and Farrell Associates to support GCSE students from Westminster Academy and King Solomon Academy understand more about Sustainable Design. Students are now designing their ideal scheme for sites in the Church Street regeneration. It has been agreed to sponsor a low carbon prize for the winning school through the Council's Go Green Funds.

16 Code of Construction Practice

Counsel advice is being sought on various aspects of enforceability of the extended Code of Construction Practice.

17 Nine Elms to Pimlico Bridge

- 17.1 Wandsworth Council's Nine Elms to Pimlico Bridge Design Competition attracted more than 80 expressions of interest from a range of high profile, international architectural practices (as yet unidentified). 74 concept designs have subsequently been submitted and anonymous copies of each will be displayed at public exhibitions at the Westminster Boating Base, Pimlico and the Rose Centre, Wandsworth on 23rd-24th February and 27th-28th respectively and also online: www.nepbridgecompetition.co.uk.

- 17.2 Whilst officers continue to reiterate the Council's serious concerns about the proposed bridge, a number of South Westminster residents have accepted invitations from Wandsworth's appointed consultants, Colander, to take part in a Residents' Review Panel to consider the applications and make recommendations to a Jury Panel before a winning team is chosen by Wandsworth Council in the summer.
- 17.3 The exact location of where this bridge is proposed to be located has yet to be selected and much work still needs to be done on this key point. Stage 2 of the design competition, which will ask successful entrants to put forward their design for a specific location between Nine Elms and Pimlico, will take place after the general election.
- 17.4 This is not a live development project and Westminster City Council officers continue to reiterate our strong objections to the proposals. We have already received letters of objection to the bridge from the Westminster Boating Base, and have held meetings with Churchill and Tachbrook Ward Councillors and local amenity societies.

18 East-West Cycle Superhighway

- 18.1 The TfL Board agreed on 4th February to progress the scheme to construction, beginning on 27th April on the first sections of the route.
- 18.2 A consultation is currently underway (closing on 29th March) for sections of the route through The Royal Parks and re-consultation on proposals for the Lancaster Gate gyratory.
- 18.3 The City Council supports the overall scheme in principle, but needs to see a solution for Parliament Square that addresses concerns raised, and will not approve this element until agreement is reached.

19 Cycle Strategy and Projects

- 19.1 Abandoned Bikes – A bike building scheme has been identified to be the recipient of abandoned bikes collected by the City Council. We are in discussions with Westminster Academy, who have an ideal site for the workshop. Once the venue is confirmed, a Bike Building Course will be run alongside the Abandoned Bikes Programme.
- 19.2 Bike Loan Scheme – A number of sites will be able to offer 80 bikes on loan with support for the borrowers, 60 at our Bike it Hub schools and 20 for users of the Beethoven centre.
- 19.3 Ride Leader training - This is being offered to community groups who want to ride together. Sports Development will be taking it up so as to enable trainees to move between sporting venues by bike.

- 19.4 Big Spring Event – We have identified two venues to run two events in the spring. Further details will be confirmed shortly.
- 19.5 Westminster Cycle Station – There are now four venues - Hyde Park, Paddington Station, Soho and Wellington Street (Aldwych). We have already doubled the signup rate for adult training as a result of this programme.
- 19.6 Incentive Scheme – In conjunction with Public Health and Imperial College we are developing a smartphone app to help people increase activity levels and improve health. Delivery of the app is expected within three months.